

SERVING THE FOOD INDUSTRY SINCE 1951

## Stainless Steel Hydraulic Piston Sausage Stuffers with 95lb / 43kg Capacity

|        |              |               |               |
|--------|--------------|---------------|---------------|
| ITEM:  | 45951        | 46102         | 46103         |
| MODEL: | SS-ES-0095-F | SS-ES-0095-FS | SS-ES-0095-FT |



**Experience the power of hydraulic technology that makes sausage stuffing smoother and more efficient than ever.**

The hydraulic piston ensures consistent pressure, making it easy to control the sausage stuffing process and achieve professional results every time. It's built to withstand the demands in the kitchens. Upgrade your sausage-making game with this equipment.

**FEATURES:**

- 2 wheels and handle for easy transport
- Easily accessible speed control
- Pressure gauge
- Removable lid; adjustable lock nuts with handle
- Independent hydraulic oil reservoir
- Thermal protected motor
- Automatic knee lever lock until the piston reaches the lower position



Ergonomic knee lever  
Reversible operating direction



Removable lid,  
adjustable lid lock nuts with handles



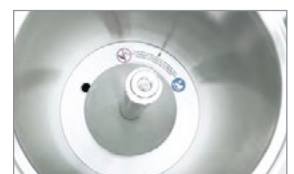
Speed control & pressure gauge



3 transparent nozzles,  
ø ext 14, 20 and 30 mm.  
Maximum hygiene,  
without edges



Adjustable anti-vibration feet



Fully stainless steel barrel bottom with water draining outlet. Simple cleaning.



Telephone: 1-800-465-0234

Fax: (905) 607-0234

Email: sales@omcan.com

Website: www.omcan.com



Authorized Dealer



FOR 45951

NEMA 5-20P  
125VAC / 20 AMP



FOR 46102

NEMA 6-15P  
250VAC / 15 AMP

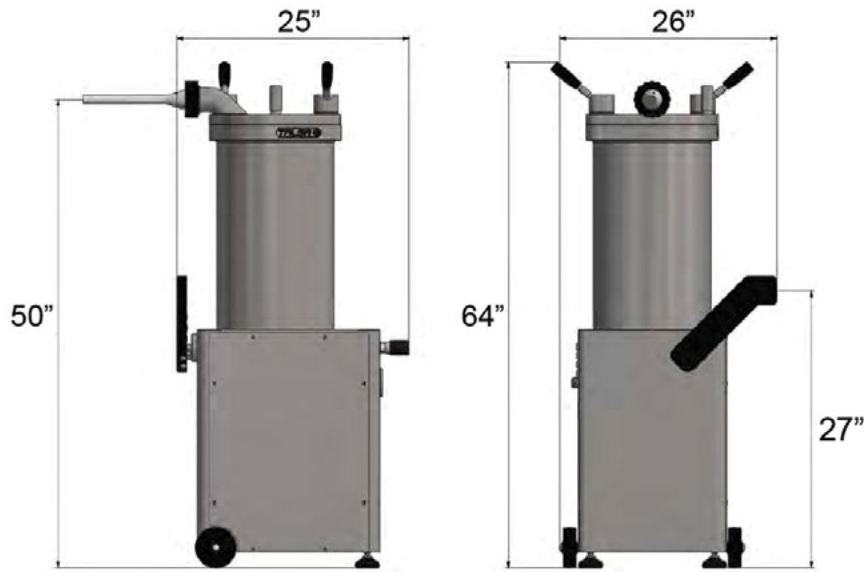


FOR 46103

NEMA 5-30P  
125VAC / 30 AMP



## TECHNICAL DRAWING



## TECHNICAL SPECIFICATION

| Features              | 1,800W, 110V with 1Ph                 | 1,800W, 220V with 1Ph   | 1,800W, 208V with 3Ph   |
|-----------------------|---------------------------------------|-------------------------|-------------------------|
| Item                  | 45951                                 | 46102                   | 46103                   |
| Model                 | SS-ES-0095-F                          | SS-ES-0095-FS           | SS-ES-0095-FT           |
| Approx. Meat Capacity | 95 lb. / 43 kg.                       | 95 lb. / 43 kg.         | 95 lb. / 43 kg.         |
| Barrel Capacity       | 51 L / 13 Gal                         | 51 L / 13 Gal           | 51 L / 13 Gal           |
| Operating Temperature | 5 to 40°C / 40 to 100°F               | 5 to 40°C / 40 to 100°F | 5 to 40°C / 40 to 100°F |
| Power                 | 2.5 HP / 1,800 W                      | 2.5 HP / 1,800 W        | 2.5 HP / 1,800 W        |
| Amps                  | 23 A                                  | 12.5 A                  | 8 A                     |
| Electrical            | 110V / 60Hz / 1Ph                     | 220V / 60Hz / 1Ph       | 208-220V / 60Hz / 3Ph   |
| Net Weight            | 580 lb. / 260 kg.                     |                         |                         |
| Net Dimensions        | 25" x 26" x 64" / 635 x 660 x 1626 mm |                         |                         |
| Gross Weight          | 660 lb. / 300 kg.                     |                         |                         |
| Gross Dimensions      | 29" x 27" x 59" / 737 x 686 x 1499 mm |                         |                         |
| Plug Type             | NEMA 5-20P                            | NEMA 6-15P              | NEMA 5-30P              |



## OTHER ACCESSORIES (SOLD SEPARATELY)

| Item  | Description                                    | Compatible          |
|-------|--|---------------------|
| 69578 | Black Stainless Steel Swivel Caster with Break | 45951, 46102, 46103 |